

SPECIFICATIONS

Model	5x42 (#28041)
Visual magnification, x	5
Objective Lens, mm	42
Resolution, lines/mm	40
Angular Field of View, °	5
Camera Resolution, pixel	510x492
Viewing Range, m	250
Operation Voltage, V	7.2-9 (6xAA)
Power Supply	DC 6-12 V \approx 1000 mA
Tripod Mount, inch	1/4
Video Output Signal Standard	CCIR / EIA*
Temperature Range	-4°F~+95°F / -20°C~+35°C
Operating Time (without/with IR-illuminator), hour	10/3
Length, inch/mm	6.7 / 170
Width, inch/mm	4.6 / 116
Height, inch/mm	3.0 / 76
Weight (with/without batteries), oz/kg	28.2/22.9//0.8/0.65

* Depending on the region of sale.

PACKAGE CONTENTS:

- Digital Monocular RANGER
- Carrying Case
- Neck Strap
- Extra Battery Container
- Variable Power Switching Adapter
- Output Video Cable
- Lens Cleaning Cloth
- Operating Manual
- Warranty Registration Card
- Car Adapter



For improvement purposes, design of this product is subject to change.

OPERATING MANUAL

Please read this manual before using your RANGER.

RANGER is equipped with a built-in, high power IR-illuminator that has a gradual IR adjustment and memory controller, which provides effective viewing in most night conditions. The unit can be attached to a standard tripod that uses a 1/4 inch mounting thread. RANGER has a built-in video-out connector which can be used to pair the device with a monitor or to record video via a recording device (such as a video camera). For the best image quality, it is recommended to set up the unit on a tripod before attaching the video cables and recording devices.

The unit is equipped with a special connector that allows RANGER to be powered by a 12 volt car outlet. It operates for up to 10 hours using 6 AA batteries. The RANGER has an ergonomically-designed, water resistant, durable plastic body that helps protect the unit and creates versatility.

Yukon's RANGER is ideal for the following applications:

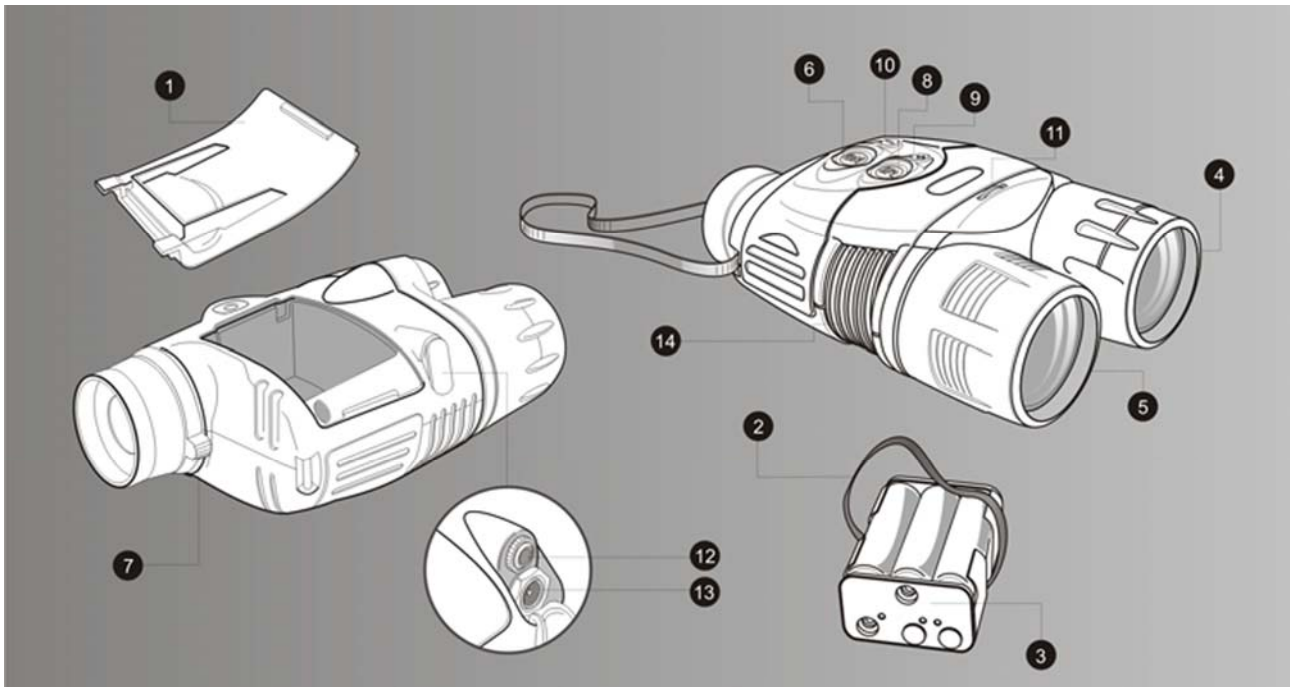
- Surveillance
- Hunting & camping
- Sports and night navigation and observation
- Commercial and personal fishing and boating
- Rescue, recovery, security and law enforcement
- Surveillance and video recording in continuously changing light conditions from dawn to absolute darkness

BATTERY INSTALLATION

1. Remove the battery compartment cover (1).
2. Pull out the battery container (3) using the attached strap (2).
3. Slide batteries into the battery container (3). Pay attention to «+» (positive) and «-» (negative) symbols marked on the walls of the container.

4. Insert the battery container (3) back into the battery compartment. Make sure the battery container is re-inserted properly particularly watching for the orientation of the battery container contacts.
5. Return the battery compartment cover (1) to its original position.

Attention! It is strongly recommended to use only SINGLE-TYPE batteries otherwise the device's operating time drastically decreases.



OPERATING INSTRUCTIONS

1. Remove the lens caps from the objective lens (4) and from the long-range IR-illuminator (5).
2. Press the button marked «ON» (6) to turn on the device. A stable green light indicates that the device is ready for use. A flashing green light indicates that the battery power level is low. A flashing red light indicates that the battery is empty.
3. Locate an object within 20 to 30 meters.
4. Adjust the sensitivity of the device (visually it is determined as image brightness) by turning the adjustment wheel (11).
5. Rotate the eyepiece's lever (7) and the objective (4) until you see a sharp image. When you turn the device on, the auxiliary short-range IR-illuminator is turned on automatically. Press the «IR» button (8) to turn the main IR-illuminator on. Choose the operation modes of the IR-illuminator: press and hold the «+» (9) or «-» (10) buttons to increase or decrease respectively the power of the IR-illuminator. The use of the IR-illuminator in the optimal mode prolongs operating time. If the device is focused on an object closer than 15 metres, the emission spot of the main IR-illuminator (bright light circle) will be shifted to the right side of the display.
6. When changing the viewing distance, try to see a sharp and high-quality image by rotating the objective (4) and the sensitivity adjustment wheel (11) and by changing the operating modes of the IR-illuminator. Do not rotate the eyepiece's lever (7) the device is already individually adjusted.
7. Plug the output video cable into the RANGER's video-output jack (12) to transmit the observed image to an external LCD monitor. When the RANGER is coupled with video equipment, the observed image can be recorded.
8. To connect the RANGER to a vehicle's 12V auxiliary power port, plug the car adapter into the RANGER's power input jack (13) and connect the other end of the cable to the vehicle's auxiliary power port.
9. To connect the RANGER to a household outlet, use a variable power switching adapter.

Be careful, observe the polarity shown on the inner side of the battery cover.

NOTE. When the batteries are in the container and the external power source is turned on, the device operates on the external power source. If you unplug the external power source, you have to press the «ON» button to make the device operate on the batteries.

CARE AND STORAGE

- Do not subject the digital NV device to shock or impact. Do not drop.
- Turn off the device when not in use and when moving the unit.
- The device can be used in daylight as well as nighttime conditions.
- After using the device in cold temperatures, please, wait up to 5 hours before using the device in the warm temperatures. This helps prevent condensation on the lenses.
- Do not leave the device in direct sunlight or rain.
- Water, sand, dust, and salt can damage the device.
- Do not cover the vent grid (14) of the IR-illuminator. Please keep the grid clean to insure proper performance of the IR illuminator.
- The device can be powered with 6 nickel cadmium batteries as well as 6 AA batteries.
- The power level of the main and auxiliary IR-illuminators when turning the device on with the «ON» button (6) and switching the IR-illuminators with the «IR» button (8) corresponds to the value previously set with the «+» (9) or «-» (10) buttons.
- Do not connect stray devices (headphones, for example) to the «Video» port. This may put the device out of action.
- When focusing on the display (you can see the fine black net) 7 light or dark spots on the whole field of view in the image plane are acceptable.
- The main IR-illuminator can not be focused.

CLEANING

- Do not scratch the external lens surfaces or touch them with your fingers.
- Clean the device's lenses with optic/camera lens tissue or a clean cloth moistened with alcohol. You may use your breath to mist the surface of the glass prior to wiping. Clean the device's surfaces with alcohol if necessary and dry thoroughly.
- The RANGER's plastic surfaces do not require special treatment. If necessary, clean the unit's surfaces with a clean, soft cloth and a petroleum-based jelly and dry thoroughly.

Important Note

Do not pour alcohol directly on the lenses.

Do not clean lenses and unit surfaces with any paper, such as newspaper, notebook paper, etc.: this can damage the coating.

STORAGE

- Remove the unit's batteries if the device will not be used for longer than 2 months.
- Always store the RANGER in its case.
- Always store the RANGER in a dry, well-ventilated area away from heating/air conditioning vents and other heating devices. Temperature should be greater than +50F (+10oC), and humidity should not exceed 70%.

TROUBLESHOOTING

The Table lists possible problems that you may encounter with your equipment. If the equipment problem is not listed or the corrective actions listed do not correct the issue, notify the manufacturer.

PROBLEM	TEST OF INSPECTION	CORRECTIVE ACTION
1. Monocular fails to activate	Visual Check for defective, missing or improperly installed batteries or the battery container.	Turn unit OFF and then ON Replace or install batteries or the battery container correctly.
2. IR Illuminator fails to activate	The «-» button (10) is in its extreme position. The sensitivity adjustment wheel (11) is in its extreme position.	Press the «+» (9) button and hold for 5-8 seconds. Adjust sensitivity of the device.
3. Poor image quality	Check the objective lens and eyepiece, making sure they are focused according to the instructions listed in section: OPERATING INSTRUCTIONS. Check for fog or dirt on the lens.	Follow the instructions to adjust the device.
4. There are several light or black dots (pixels) on the display of the device.	Presence of dots is caused by matrix production technology and is not a defect.	No action needed.