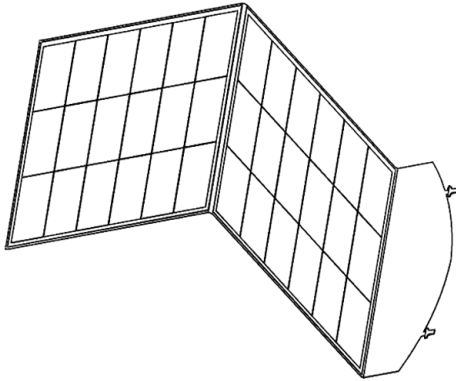




SPP-F40 40 Watt Folding Solar Panel



Solar Panel Features

- Up to 40 Watts Output
- Up to 20V Output
- Angled or Flat Setup
- Smart Junction Box with Multiple Charging Outputs
- Direct charging via USB
- 2 5V DC USB-A Charging Ports
- 1 5V DC USB-C Charging Port
- 1 20V DC 5525 Barrel Type Charging Port
- LED Power Level Meter
- Charges Multiple Devices Simultaneously
- Water Resistant (Panel Only)
- Built-In Zippered Compartment for Junction Box and Cables
- Built-in Carrying Handle
- Foldable for Easy Transport and Storage

What's Included

- Melowave 40W Foldable Solar Panel
- 5-Port Smart Charging Junction Box
- 3.28Ft/1M Extension Cable with 5525/5521 DC Barrel Connectors
- 10 Assorted DC Power Adapters
- Built-in 20A XT60 Type Connector Cable
- 40 in. Hardwire Cable With XT60 Female Connector
- Owners Manual

User Manual

Introduction

Thank you for purchasing the Melowave 40 watt Solar Panel. If used and cared for properly, this solar panel should provide you with years of reliable, trouble-free operation. Please read and follow the instructions in this manual carefully before using the panel to insure proper and safe operation. It is strongly advised to keep this manual and store it with the panel when not in use for future reference.

Important Safety Information

The Melowave Solar Panel is an electrical device, and you should exercise all appropriate safety precautions for this type of device. This manual contains important instructions on the safe use of the solar panel. Please read and follow them carefully before attempting to use the panel.

For safety and optimal performance:

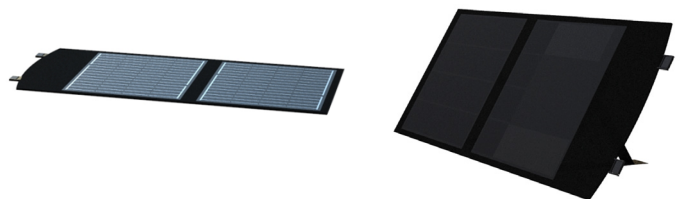
- Do not use/store the panel or its components in a wet, damp or extremely humid environment
- Do not scratch the surface of the panel
- Do not touch or handle the surface of the panel excessively when in use
- Do not expose the panel or its components to extreme heat
- Do not overload the panel beyond its maximum output power rating
- Do not place heavy objects on top of the panel when storing it

Important!

Although the outer cover and surface of the solar panel are somewhat water resistant, the Smart Junction Box is not. Do not attempt to operate the solar panel if the Smart Junction Box or any of its connected components (including cables, connectors or adapters) are wet, damp or exposed to moisture.

Setup

Setup is quick and easy. Simply unfold the panel, place it on a firm, solid surface and aim it towards the sun. The panel can lay flat and aimed straight up or positioned at a 45 degree angle by unfolding the foldable legs attached to the back of the panel at each end.

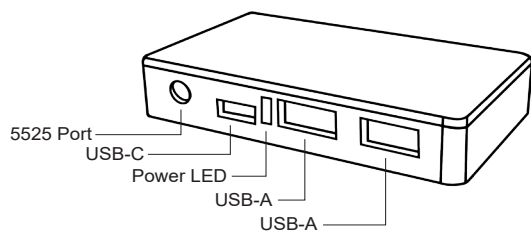


Operation

To charge or power a device, locate the Smart Junction Box on the back of the Solar Panel (or underneath, if the Panel is laying flat on its backside). This is the electrical hub for connecting to the panel.



When the Solar Panel is active, the green power light on the Smart Junction Box will light, indicating that the panel is operational. Once power is available, simply use choose an available port on the Smart Junction Box to connect your device and supply the power to it.



The Smart Junction Box offers multiple connection options for maximum compatibility with most consumer electronic devices currently on the market. It has two USB-A ports, one USB-C port and one 5525 DC power port. A cable with a 20 amp rated XT60 Male plug is hard wired to the panel for powering or charging devices that use it.



Extension Cable

DC Power Adapters

The Melowave Folding Solar Panel also includes a 1 meter extension cable with 5525 barrel plugs at each end. Complementing this extension cable is an assortment of 10 commonly used DC barrel adapters for compatibility with a wide variety of DC powered devices.

Product Specifications

Port/Connector	USB-A	USB-C	5525	XT60
Voltage	5VDC	5-12VDC	20V	20V
Maximum Current Output	2A	3A	20A	20A
Maximum Wattage Output	40W			
Operating Temperature	-40°F~+176°F / -40°C~+80°C			
Foldable Supports	2			
Output Ports	USB-A (2), USB-C (1), 5525 (1), XT60 Male (1)			
Size (Folded)	14.27 x 16.14 x 1.57 in / 365 x 410 x 40mm			
Size (Extended)	32.28 x 16.14 x 0.19 in / 820 x 410 x 5mm			
Weight	3.74 lb / 1.7 kg			

Limited Warranty

We warrant this product against defects in material and workmanship as follows:

Solar Panel and its original primary components for a period of one (1) year from date of purchase.

Accessories (including cables and adapters) for a period of six (6) months from date of purchase.

This warranty is limited to the repair and replacement of the defective components and is not valid if the product has been tampered with, misused, abused, used with unapproved accessories, subjected to unauthorized disassembly, unauthorized repair, replacement of unauthorized parts, unavoidable conditions, human destruction, water damage or environmental damage. This warranty is void if the serial number is defaced or altered.

If service, repair or replacement is required within the warranty period, such repair or replacement will be made free of charge by Melowave or the authorized Melowave dealer through whom the equipment was purchased. If the owner requires any service or repair from any dealer through whom the equipment was not purchased, the cost of repair must be made by the owner.

This warranty is valid for the original purchaser or owner of the product and is not transferable.

THIS LIMITED WARRANTY IS THE ENTIRE WARRANTY FOR THIS PRODUCT AND IS IN LIEU OF ALL OTHER WARRANTIES, EITHER EXPRESSED OR IMPLIED, INCLUDING

ANY WARRANTY OF MERCHANTABILITY AND FITNESS FOR A PARTICULAR PURPOSE. THIS WARRANTY DOES NOT COVER OR PROVIDE FOR THE REIMBURSEMENT OR PAYMENT OF ANY DAMAGES, INCLUDING INCIDENTAL OR CONSEQUENTIAL DAMAGES RELATED TO THE USE OF THIS PRODUCT. Some states do not allow this exclusion or limitation of damages so the above limitation or exclusion may not apply to you. This warranty is valid only within the United States of America.

Note: Product features, specifications and warranty terms are subject to revision by the manufacturer without notice. We are not responsible for unintentional errors or omissions on product packaging.