

MIDLAND®

MICROMOBILE® GMRS 2-WAY RADIO



MXT400

midlandusa.com

CONTENTS

| | |
|-----------------------|---|
| FEATURES | 4 |
|-----------------------|---|

| | |
|-------------------------|---|
| FCC NOTICE | 5 |
|-------------------------|---|

| | |
|---|---|
| Exposure To Radio Frequency Energy | 5 |
|---|---|

INSTALLING YOUR RADIO

| | |
|-----------------------------------|---|
| Preparation for Installation..... | 6 |
|-----------------------------------|---|

| | |
|---------------------------------------|---|
| Installing the Mounting Bracket | 7 |
|---------------------------------------|---|

| | |
|------------------------------|---|
| Installing the Antenna | 8 |
|------------------------------|---|

| | |
|--|---|
| Electrical and Rear Panel Connections..... | 9 |
|--|---|

| | |
|--------------------------------|---|
| Connecting the Microphone..... | 9 |
|--------------------------------|---|

| | |
|--------------------------------|----|
| Using an External Speaker..... | 10 |
|--------------------------------|----|

CONTROLS AND INDICATORS

| | |
|-------------------------|----|
| Operating Controls..... | 10 |
|-------------------------|----|

| | |
|------------------|----|
| LCD Display..... | 11 |
|------------------|----|

| | |
|--------------------------|----|
| Microphone Controls..... | 11 |
|--------------------------|----|

| | |
|-----------------------------|----|
| Rear Panel Connections..... | 12 |
|-----------------------------|----|

OPERATING YOUR RADIO

| | |
|------------------|----|
| About Range..... | 13 |
|------------------|----|

| | |
|-------------------|----|
| Power On/Off..... | 14 |
|-------------------|----|

| | |
|-----------------------------------|----|
| Selecting the Active Channel..... | 14 |
|-----------------------------------|----|

| | |
|--|----|
| Transmitting and Receiving a Call..... | 14 |
|--|----|

| | |
|-------------------------|----|
| Locking the Keypad..... | 15 |
|-------------------------|----|

| | |
|--------------------------|----|
| Using Monitor Mode | 15 |
|--------------------------|----|

| | |
|-----------------------------------|----|
| Scanning for Active Channels..... | 16 |
|-----------------------------------|----|

| | |
|-----------------|----|
| Call Alert..... | 16 |
|-----------------|----|

UTILITY FUNCTIONS

| | |
|-------------------------------|----|
| Selecting a Privacy Code..... | 17 |
|-------------------------------|----|

| | |
|---|----|
| Selecting the Transmit (TX) Power Level | 18 |
|---|----|

“MENU” MODE FUNCTIONS

| | |
|---------------------------------------|----|
| Transmit (TX) Function | 19 |
| Talk Around (Talk) Function | 19 |
| Voice Compander (Comp) Function | 20 |
| Silent Operation (Mute) Function..... | 20 |
| Call Alert (Call) Function..... | 20 |
| Time Out Timer (TOT) Function..... | 21 |
| Auto Power-Off (APO) Function | 21 |
| Squelch Sensitivity | 22 |
| Display Brightness..... | 22 |
| Repeater Channels..... | 22 |
| Restoring The Default Settings..... | 23 |

CARE AND MAINTENANCE 23**TROUBLESHOOTING GUIDE.....** 24**SPECIFICATIONS** 25**ACCESSORIES.....** 28**FCC WARNINGS & STATEMENTS.....** 29**WARRANTY.....** 30

WELCOME TO THE WORLD OF MIDLAND RADIO

Congratulations on your purchase of a high quality MIDLAND product. Your MXT400 2-way radio represents state-of-the-art high tech engineering. Designed for General Mobile radio Service (GMRS) operation, this compact package is big on performance. It is a quality piece of electronic equipment, skillfully constructed with the finest components. The circuitry is all solid-state and mounted on a rugged printed circuit board. Your MXT400 radio is designed for reliable and trouble-free performance for years to come.

FEATURES

- 15 GMRS Channels
- 8 Repeater Channels
- 142 Privacy Codes (38 CTCSS / 104 DCS)
- Monitor Function
- Scan Function
- Keypad Lock
- Power Hi/Mi/Lo Settings
- External Speaker Jack

FCC NOTICE

The MXT400 operates on GMRS (General Mobile Radio Service) frequencies, which require a Federal Communications Commission (FCC) license. You must be licensed prior to operating on channels 1-7, 15-22 or RP15-22, which comprise the GMRS channels of the MXT400. Serious penalties may result from unlicensed use of GMRS channels, in violation of FCC rules, as stipulated in the Communications Act's Sections 501 and 502 (amended). You will be issued a call sign by the FCC that should be used for station identification when operating your radio on GMRS channels. You should also cooperate by engaging in permissible transmissions only, avoiding channel interference with other GMRS users, and being prudent with the length of your transmission time.

To obtain a license or ask questions about the license application, contact the FCC at 1-888-CALL FCC or go to the FCC's website:

[http:// www.fcc.gov](http://www.fcc.gov) and request form **605**.

Exposure To Radio Frequency Energy

Your Midland radio is designed to comply with the following national and international standards and guidelines regarding exposure of human beings to radio frequency electromagnetic energy.

- United States Federal Communications Commission, Code of Federal Regulations: 47 CFR part 2 sub-part J
- American National Standards Institute (ANSI)/Institute of Electrical & Electronics Engineers (IEEE) C95. 1-1992
- Institute of Electrical and Electronics Engineers (IEEE) C95. 1-1999 Edition
- National Council on Radiation Protection and Measurements (NCRP) of the United States, Report 86, 1986
- International Commission on Non-Ionizing Radiation Protection (ICNIRP) 1998
- To control your exposure and ensure compliance with the general population or uncontrolled environment exposure limits, transmit no more than 50% of the time. The radio generates measurable RF energy exposure only when transmitting.
- The consumer must maintain a minimum safe separation distance of 38.93 inches (99 cm) from the antenna when transmitting.

INSTALLING YOUR RADIO

Preparation for Installation

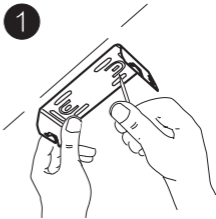
This radio may be installed in any 12-volt negative ground system vehicle. Most current U.S. and Foreign vehicles use a negative ground system, but some older models and some newer large trucks may have a positive ground. Check the specifications for your vehicle before beginning installation. Generally, you have a negative-ground system if the negative (-) battery terminal is connected to the motor block. Contact your dealer if you are unable to determine your vehicle's polarity system.

1. Read these instructions completely before beginning installation.
2. Read and follow all safety precautions in your vehicle's Service Manual.
3. Make sure all necessary tools, materials, and parts are on hand.
4. Disconnect the negative (-) battery cable before installing your radio. Be sure to reconnect the cable when installation is complete.
5. Determine a mounting location for your radio. Choose a location that does not impair visibility or interfere with driving. Also take into consideration the routing and length of the lead wires and cables to the power source, antenna, and/or optional external speaker.

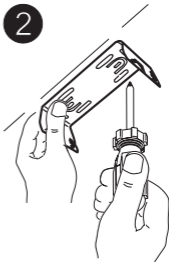
CAUTION: *Extreme care should be exercised when drilling into the dash to avoid damage to under dash electronic ignition, cruise control, instrument and/or accessory wiring.*

Installing the Mounting Bracket

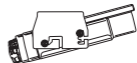
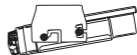
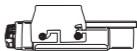
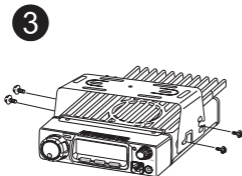
1. Using the mounting bracket as a template, mark the location of each screw hole. Use a nail or other sharp pointed object to mark the hole locations.



2. Attach the bracket with the supplied self-tapping screws. Tighten the screws securely. **DO NOT OVERTIGHTEN.**



3. Determine the best suited position for using the radio, then insert and tighten the supplied SEMS screws.

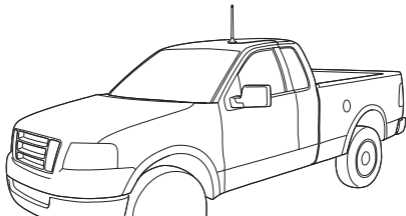


Installing the Antenna

To get the best range from the MXT400 an external antenna (50Ω) should be used. The antenna is intended to be attached to the vehicle's roof, trunk or similar location. Specific installation requirements vary between vehicles. Use the following guidelines to install the antenna.

Where you locate your antenna does make a difference.

1. Metal surfaces covered by fiberglass or vinyl may affect radio range. Avoid these locations.
2. Mount the antenna as high on the vehicle as possible. The higher the better.
3. If possible, mount the antenna in the center of whatever surface you choose.
4. The antenna cable is 19.7 feet (6 meters) long. Be sure the mounting location will allow for connection of the cable to the radio.
5. Be sure the mounting location is clean and dry before installing the antenna.
6. Route the antenna cable through an accessible entry point, such as a rear door or trunk opening.
7. When routing the antenna cable inside the vehicle, keep the cable away from noise sources, such as the ignition system, gauges, etc.
8. Exercise care to prevent cable damage. Make use of existing gaskets, grommets and weather stripping to protect the cable along its route.



Electrical and Rear Panel Connections

Refer to **Rear Panel Connections** for rear panel connector locations.

NOTE: *Radio antenna is installed separately.*

Connecting the Radio to a Power Source

1. Connect the positive lead (RED wire with in-line fuse holder) to either (a) the fuse block or (b) directly to the positive post of the vehicle's battery.

NOTE: *The fuse block is usually the most convenient connection point. The power cord positive lead can also be connected to the Accessory terminal on the fuse block or ignition switch, so the radio automatically turns off when the ignition is turned off.*

2. Tightly connect the ground lead (BLACK wire) directly to the vehicle's metal frame. A good direct metal-to-metal ground is essential for optimum performance.

Connecting the Microphone

Insert the RJ45 connector into the front of the MXT400. To remove, lightly pinch the bottom region of the boot assembly of the Microphone and gently pull towards you.

The microphone bracket can then be attached to the vehicle dash or other convenient location in a manner similar to the mounting bracket.

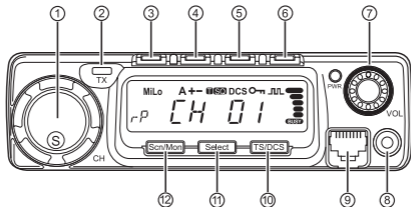
Using an External Speaker

The MXT400 provides a rear-panel jack for connection of an optional external speaker (sold separately).

When selecting an external speaker, ensure the speaker has 8-ohm impedance and is rated for 4.0 watts.

NOTE: When an external speaker is connected, the radio's internal speaker is automatically disabled.

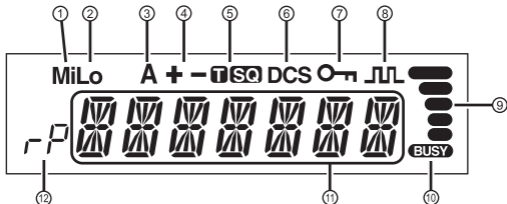
CONTROLS AND INDICATORS



Operating Controls

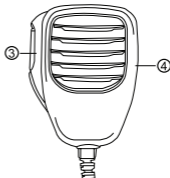
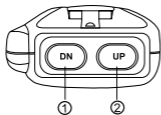
| | | | |
|---|--------------|----|--|
| 1 | Channel | 7 | Volume |
| 2 | TX Indicator | 8 | Data Terminal - not used in the MXT400 |
| 3 | Menu | 9 | Mic connector |
| 4 | Call/Lock | 10 | Privacy Tone |
| 5 | Power Level | 11 | Select |
| 6 | Power On/Off | 12 | Scan/Monitor |

LCD Display



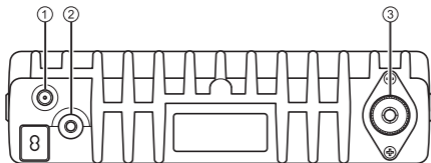
| | | | |
|---|--------------------|----|------------------|
| 1 | Medium Power | 7 | Keypad Lock |
| 2 | Low Power | 8 | Compander |
| 3 | Auto Power Off | 9 | Signal Strength |
| 4 | Repeater Offset | 10 | Receiver Active |
| 5 | CTCSS Privacy Tone | 11 | Channel Name |
| 6 | DCS Privacy Tone | 12 | Repeater Channel |

Microphone Controls



| | | | |
|----|--------------------|---|--|
| 1. | Channel Down | 4 | Lock Switch - slide the switch down to lock all of the buttons on the mic except the PTT |
| 2. | Channel Up | | |
| 3. | PTT (Push to Talk) | | |

Rear Panel Connections



- 1. External Power Jack** - Connection Terminal for optional power cable (sold separately).
- 2. EXT SPKR Jack** - 3.5mm Audio connector for optional external speaker (sold separately) (see **Using an External Speaker** for specifications).
- 3. ANT Jack** - SO-239 UHF connector for external antenna (sold separately)

OPERATING YOUR RADIO

About Range

Your MXT400 is designed to give you maximum operating range under optimum conditions.



Optimum conditions for maximum operating range are:

- Over water
- In open rural areas without obstructions
- On flat areas where you can see the other radio user

To ensure you get maximum range:

- Be sure to mount the antenna (sold separately) as high as possible on your vehicle
- Be sure to set your radio to use Hi power (see **Selecting the Transmit (TX) Power Level**)

Power On/Off

To turn the radio on and off:

1. With the radio off, quickly press and release the **Power On/Off** button to turn the radio on.
 - The LCD display will display the Midland welcome screen and then display the most recently selected channel.
2. With the radio on, press and hold the **Power On/Off** button to turn the radio off.
 - The LCD display will go blank when the radio turns off.

Selecting the Active Channel

IMPORTANT! *To communicate between two MXT400 radios or any GMRS radio, both radios must be set to the same channel and Privacy Code (see **Selecting a Privacy Code**) selections.*

To select the active channel:

1. Be sure the radio is turned on (**see Power On/Off**)
2. Rotate the **Channel** Knob clockwise to scroll forward through the available channels. Rotate the **Channel** Knob counter-clockwise to scroll backward through the available channels.
 - The **Channel** icon on the LCD display will show the currently selected channel.

Transmitting and Receiving a Call

IMPORTANT! *To communicate between two MXT400 radios or any GMRS radio, both radios must be set to the same channel and Privacy Code.*

To transmit and receive a call:

1. Be sure the radio is turned on (see **Power On/Off**)
2. To transmit a call, press and hold the **PTT** button on the microphone, and speak into the microphone in a normal voice.

NOTE: *For maximum clarity, hold the microphone 2 to 3 inches from your mouth when speaking.*



- The **TX Indicator** will show continuously on the LCD display while transmitting.
3. To receive a call, release the **PTT** button on the microphone.
 - The **Busy** icon will show on the LCD display when your radio is receiving a transmission.
 4. If necessary, rotate the **Volume** Knob to increase or decrease radio volume.

Locking the Keypad

You can use the keypad “lock” function to prevent accidentally changing your radio’s settings. When the function is enabled, the current radio settings are “locked” in place.

NOTE: When the “lock” function is enabled, the **PTT** button on the microphone and the **Volume** Knob on the radio remain active.

To “lock” and “unlock” the keypad:

1. Be sure the radio is turned on (see **Power On/Off**)
2. Press and hold the **Call** button.
 - The **Keypad Lock**  icon will show on the LCD display when the keypad is “locked.”
3. Repeat steps 1 and 2 to “unlock” the keypad.
 - The **Keypad Lock**  icon will turn off when the keypad is “unlocked”

Using Monitor Mode

Monitor mode lets you check for activity on the current active channel. You can also use Monitor mode to adjust the volume of your radio when not receiving a signal.

To enter and exit Monitor mode:

1. Be sure the radio is turned on (see **Power On/Off**)
2. Be sure you have selected the desired channel (see **Selecting the Active Channel**)

3. Press and hold the **Scn/Mon** button to enter Monitor mode.
 - You will hear any activity on the current selected channel.
4. Rotate the **Volume** Knob to increase or decrease radio volume.
5. Once the radio volume has been adjusted to the desired level, press and hold the **Scn/Mon** button to exit Monitor mode.

Scanning for Active Channels

Your MXT400 includes an “auto-scan” mode that continuously scans all 15 GMRS channels for activity.

To enter and exit “auto-scan” mode:

1. Be sure the radio is turned on (see **Power On/Off**)
2. Quickly press and release the **Scn/Mon** button to enter “auto-scan” mode
 - Your radio will rapidly scan through the 15 GMRS channels and will pause on any active channel.
 - “Auto-scan” will resume when there has been no activity on the current channel for four seconds.
3. To transmit during “auto scan,” press and hold the **PTT** button on the microphone while the radio is paused on the desired channel.
 - The radio will remain on the active channel for three seconds after the **PTT** button is released.
4. To exit the “auto-scan” mode, quickly press and release the **Scn/Mon** button.

Call Alert

Your radio can transmit a call alert for a fixed length of time.

To send a call alert

1. Press and release the **CALL** button.
 - The **TX** indicator will enable while transmitting a call alert and a tone can be heard on the speaker for confirmation.

UTILITY FUNCTIONS

Utility functions let you configure several operational parameters of the MXT400 to suit your personal preferences. For additional operational functions, see “MENU” MODE FUNCTIONS.

Selecting a Privacy Code

Continuous Tone Coded Squelch System (CTCSS) and Digitally Coded Squelch (DCS) are systems that allow several users to share the same channel without disturbing each other. When CTCSS or DCS are enabled for a selected channel, the channel is muted to all incoming signals unless they carry the correct CTCSS or DCS tone.

When a transmission with the correct tone is received, the mute is removed and the voice audio can be heard. When the transmission ends the channel is muted again. Transmissions that do not have the correct tone are not heard.

The MXT400 has 142 Privacy Codes (38 CTCSS codes and 104 DCS codes), which can be applied to any channel. If desired, you can select a different Privacy Code for each channel. See **CTCSS Privacy Codes Frequency Chart and DCS Privacy Codes Chart** for lists of available Privacy Codes.

IMPORTANT! *To communicate between two MXT400 radios or any GMRS radio, both radios must be set to the same channel (see **Selecting the Active Channel**) and Privacy Code selections.*

To select a CTCSS Privacy Tone:

1. Press the **TS/DCS** button once to enter the CTCSS Privacy Code settings.
2. Use the **Channel** Knob to scroll forward or backward through the CTCSS Tone options until the LCD displays the privacy tone frequency desired.
3. Press the **Select** button to confirm your selection.
 - The **TSQ** icon will show on the LCD display, according to your selection.
4. Press the **Scn/Mon** button to exit Privacy Code settings.

To select a DCS Privacy Code:

1. Press the **TS/DCS** button twice to enter the DCS Privacy Code settings.
2. Use the **Channel Knob** to scroll forward or backward through the DCS Code options until the LCD displays the privacy code desired.
3. Press the **Select button** to confirm your selection.
 - The **DCS** icon will show on the LCD display, according to your selection.
4. Press the **Scr/Mon** button to exit Privacy Code settings.

NOTE: *Pressing the **TS/DCS button**, three times while using CTCSS tones and twice while using DCS codes, will disable the Privacy settings.*

NOTE: *If you select a CTCSS Privacy Code, any pre-selected DCS Privacy Code will be cancelled, and vice-versa.*

NOTE: *If a DCS Privacy Tone is selected and you want to assign a CTCSS tone you will be taken out of the privacy tone menu and forced to start the selection process from the beginning.*

Selecting the Transmit (TX) Power Level

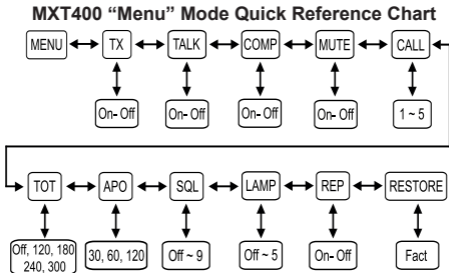
The MXT400 provides up to 3 transmit power levels; Hi, Mi and Lo. The Lo power level is generally suitable when operating under optimum conditions (see **About Range**). The Hi power level is recommended to ensure you get maximum range from your radio.

To adjust the Transmit Power Level:

1. Press the **P/VI** button to toggle the transmit power setting between **Hi**, **Mi** and **Lo**.
 - Only the **Mi** and **Lo** transmit power settings will be indicated on the LCD, when neither **Mi** or **Lo** is indicated the unit is set to **Hi** transmit power.
 - Due to output power regulations channels 1 through 7 cannot be removed from the **Lo** transmit power setting.

“MENU” MODE FUNCTIONS

The “Menu” mode provides access to the features and functions shown in the chart below. For additional utility functions, see **UTILITY FUNCTIONS**.



Transmit (TX) Function

You can disable the transmitter section of the radio if you desire to use the radio as a receive only system.

To set the Transmit Function

1. Press and hold the **Menu** button for 3 seconds to enter the Menu Mode.
2. Use the **Call** or **Plvl** buttons to scroll through the Menu options until the LCD displays **TX**.
3. Turn the **Channel** knob to select the setting you desire.
4. Press and release the **Select** button to confirm your choice.
5. Press the **Scn/Mon** button to exit the **Transmit Function**

Talk Around (Talk) Function

The Talk Around function allows you to directly communicate with other radios in your group when the repeater is not activated or out of range. The radio will use the **RX/TX** frequency and it's stored Privacy Tone settings. when the Talk Around Function is enabled

To set the Talk Around Function

1. Press and hold the **Menu** button for 3 seconds to enter the Menu Mode.
2. Use the **Call** or **Pvl** buttons to scroll through the Menu options until the LCD displays **TALK**.
3. Turn the **Channel** knob to select the setting you desire.
4. Press and release the **Select** button to confirm your choice.
5. Press the **Scn/Mon** button to exit the Talk Around Function.

Voice Compander (Comp) Function

The Voice Compander Function is used to reduce background noise and enhance audio clarity, especially in long range communication.

To set the Compander Function

1. Press and hold the **Menu** button for 3 seconds to enter the Menu Mode.
2. Use the **Call** or **Pvl** buttons to scroll through the Menu options until the LCD displays **COMP**.
3. Turn the **Channel** knob to select the setting you desire.
4. Press and release the **Select** button to confirm your choice.
5. Press the **Scn/Mon** button to exit the Compander Function.

Silent Operation (Mute) Function

The MXT400 has a Silent Operation mode. In this mode, all “beeps” and “tones” are disabled.

To set the Silent Operation:

1. Press and hold the **Menu** button for 3 seconds to enter the Menu Mode.
2. Use the **Call** or **Pvl** buttons to scroll through the Menu options until the LCD displays **MUTE**.
3. Turn the **Channel** knob to select the setting you desire.
4. Press and release the **Select** button to confirm your choice.
5. Press the **Scn/Mon** button to exit the Silent Operation Function.

Call Alert (Call) Function

The MXT400 can transmit different tones to other users alerting them to an incoming message. The MXT400 has 5 selectable tones.

To set the Call Alert Tone

1. Press and hold the **Menu** button for 3 seconds to enter the **Menu** Mode.
2. Use the **Call** or **Pvl** buttons to scroll through the Menu options until the LCD displays **Call**.
3. Turn the **Channel** knob to select the setting you desire.
4. Press and release the **Select** button to confirm your choice.
5. Press the **Scn/Mon** button to exit the Call Alert Function

Time Out Timer (TOT) Function

The Time Out Timer limits the amount of transmitting time the radio has per PTT activation.

To set the Time Out Timer

1. Press and hold the **Menu** button for 3 seconds to enter the Menu Mode.
2. Use the **Call** or **Pvl** buttons to scroll through the Menu options until the LCD displays **TOT**.
3. Turn the **Channel** knob to select the setting you desire.
4. Press and release the **Select** button to confirm your choice.
5. Press the **Scn/Mon** button to exit the Time Out Timer Function.

Auto Power-Off (APO) Function

The Auto Power-Off function allows the user to set a time interval for the radio to automatically power off after no use.

To set the Auto Power-Off Function

1. Press and hold the **Menu** button for 3 seconds to enter the Menu Mode.
2. Use the **Call** or **Pvl** buttons to scroll through the Menu options until the LCD displays **APO**.
3. Turn the **Channel** knob to select the setting you desire.
4. Press and release the **Select** button to confirm your choice.
5. Press the **Mon/Scn** button to exit the Auto Power-Off Function.

Squelch Sensitivity

The MXT400 has adjustable squelch sensitivity. The minimum squelch level (0F) is the most sensitive, allowing the squelch to open on very weak signals. Setting the squelch to the maximum setting (09) requires very strong signals to open the squelch.

To adjust the Squelch Sensitivity:

1. Press and hold the **Menu** button for 3 seconds to enter the **Menu Mode**.
2. Use the **Call** or **Plvl** buttons to scroll through the Menu options until the LCD displays **SQL**.
3. Turn the **Channel** knob to select the setting you desire.
4. Press and release the **Select** button to confirm your choice.
5. Press the **Scn/Mon** button to exit the Squelch Sensitivity Function.

Display Brightness

You can adjust the six brightness levels of the LCD display to ensure optimum visibility under various daytime and night-time lighting conditions.

To adjust Display Brightness:

1. Press and hold the **Menu** button for 3 seconds to enter the Menu Mode.
2. Use the **Call** or **Plvl** buttons to scroll through the Menu options until the LCD displays **LAMP**.
3. Turn the **Channel** knob to select the setting you desire.
4. Press and release the **Select** button to confirm your choice.
5. Press the **Scn/Mon** button to exit the Display Brightness Function.

Repeater Channels

The MXT400 has the ability to talk to GMRS repeaters, which can greatly increase radio range.

NOTE: *Be sure to be aware of the local sharing and usage policies set forth by the owner and operator of the repeater.*

To set Repeater Channel Function:

1. Press and hold the **Menu** button for 3 seconds to enter the **Menu** Mode.
2. Use the **Call** or **Pvl** buttons to scroll through the Menu options until the LCD displays **REP**.
3. Turn the **Channel** knob to select the setting you desire.
4. Press and release the **Select** button to confirm your choice.
5. Press the **Scn/Mon** button to exit the Repeater Channel Function.

Restoring The Default Settings

You can restore the factory (default) settings for your MXT400 at any time.

To restore the Default Settings:

1. Press and hold the **Menu** button for 3 seconds to enter the Menu Mode.
2. Use the **Call** or **Pvl** buttons to scroll through the Menu options until the LCD displays **RESTORE**.
3. Turn the **Channel** knob to select the **FACT** option.
4. Press and release the **Select** button to confirm your choice.
 - Upon completion the radio will enter "standby" mode at channel 1, with no Privacy Code selected.

CARE AND MAINTENANCE

CAUTION: DO NOT use alcohol or cleaning solutions to clean the radio.
DO NOT immerse the radio in water.

1. Use a soft cloth moistened with water to clean the radio.
2. Dry the radio with a dry lint-free cloth should it get wet.

TROUBLESHOOTING GUIDE

If you experience difficulties using your MXT400, refer to the following chart to correct common operation problems. If you have a problem which you believe requires service, please call first and speak with a service technician at 816-241-8500. Many problems can be remedied over the phone without returning the unit for service.

| Problem | Solution |
|---------------------------------|--|
| No Power | Check vehicle power source (battery); replace if needed. |
| | Check input power connection and/or wires to vehicle power source. |
| | Check in-line fuse; replace if needed. |
| Cannot Receive Messages | Verify both radios have the same Channel and Privacy Code settings. |
| | Make sure you are within range of the receiving radio/repeater. |
| | Confirm transmission is not affected by buildings and other structures (see About Range) |
| | If communicating with a repeater, verify if repeater requires activation code. |
| Keypad is not Responding | Make sure keypad "lock" is not on (see Locking the Keypad) |
| | Reset the radio (turn radio off then back on) |
| Backlight Display is Dim | Adjust the display illumination (see Display Illumination) |

SPECIFICATIONS

| | |
|-----------------------------|--|
| Channels: | 15 GMRS Channels and 8 Repeater Channels |
| Privacy Codes: | 38 CTCSS; 104 DCS |
| Operating Frequency: | UHF; 462.5500 ~ 462.725 MHz UHF, 462.5625 ~ 467.725 MHz |
| Power Source: | 13.8 VDC Nominal |

GMRS Frequency Chart (MHz)

| CH. No | CH. Freq. | CH. No | CH. Freq. |
|---------------------------------|-----------|--------|-----------|
| 1 | 462.5625 | 15 | 462.5500 |
| 2 | 462.5875 | 16 | 462.5750 |
| 3 | 462.6125 | 17 | 462.6000 |
| 4 | 462.6375 | 18 | 462.6250 |
| 5 | 462.6625 | 19 | 462.6500 |
| 6 | 462.6875 | 20 | 462.6750 |
| 7 | 462.7125 | 21 | 462.7000 |
| Ch. 8 ~ 14 Reserved for FRS use | | 22 | 462.7250 |

GMRS Repeater Frequency Chart (MHz)

| CH. No | RX Freq. | TX. Freq. | CH. No | RX Freq. | TX. Freq. |
|--------|----------|-----------|--------|----------|-----------|
| RP 15 | 462.5500 | 467.5500 | RP 19 | 462.6500 | 467.6500 |
| RP 16 | 462.5750 | 467.5750 | RP 20 | 462.6750 | 467.6750 |
| RP 17 | 462.6000 | 467.6000 | RP 21 | 462.7000 | 467.7000 |
| RP 18 | 462.6250 | 467.6250 | RP 22 | 462.7250 | 467.7250 |

CTCSS PRIVACY CODES FREQUENCY CHART (Hz)

| Code | Freq | Code | Freq | Code | Freq | Code | Freq | Code | Freq |
|------|------|------|-------|------|-------|------|-------|------|-------|
| 1 | 67.0 | 9 | 91.5 | 17 | 118.8 | 25 | 156.7 | 33 | 210.7 |
| 2 | 71.9 | 10 | 94.8 | 18 | 123.0 | 26 | 162.2 | 34 | 218.1 |
| 3 | 74.4 | 11 | 97.4 | 19 | 127.3 | 27 | 167.9 | 35 | 225.7 |
| 4 | 77.0 | 12 | 100.0 | 20 | 131.8 | 28 | 173.8 | 36 | 233.6 |
| 5 | 79.7 | 13 | 103.5 | 21 | 136.5 | 29 | 179.9 | 37 | 241.8 |
| 6 | 82.5 | 14 | 107.2 | 22 | 141.3 | 30 | 186.2 | 38 | 250.3 |
| 7 | 85.4 | 15 | 110.9 | 23 | 146.2 | 31 | 192.4 | | |
| 8 | 88.5 | 16 | 114.8 | 24 | 151.4 | 32 | 203.5 | | |

DCS PRIVACY CODE CHART

| No. | CODE | No. | CODE | No. | CODE | No. | CODE |
|-----|------|-----|------|-----|------|-----|------|
| 1 | 23 | 27 | 165 | 53 | 413 | 79 | 731 |
| 2 | 25 | 28 | 172 | 54 | 423 | 80 | 732 |
| 3 | 26 | 29 | 174 | 55 | 431 | 81 | 734 |
| 4 | 31 | 30 | 205 | 56 | 432 | 82 | 743 |
| 5 | 32 | 31 | 223 | 57 | 445 | 83 | 754 |
| 6 | 43 | 32 | 226 | 58 | 464 | 84 | 36 |
| 7 | 47 | 33 | 243 | 59 | 465 | 85 | 53 |
| 8 | 51 | 34 | 244 | 60 | 466 | 86 | 122 |
| 9 | 54 | 35 | 245 | 61 | 503 | 87 | 145 |
| 10 | 65 | 36 | 251 | 62 | 506 | 88 | 212 |
| 11 | 71 | 37 | 261 | 63 | 516 | 89 | 225 |
| 12 | 72 | 38 | 263 | 64 | 532 | 90 | 246 |
| 13 | 73 | 39 | 265 | 65 | 546 | 91 | 252 |
| 14 | 74 | 40 | 271 | 66 | 565 | 92 | 255 |
| 15 | 114 | 41 | 306 | 67 | 606 | 93 | 266 |
| 16 | 115 | 42 | 311 | 68 | 612 | 94 | 274 |
| 17 | 116 | 43 | 315 | 69 | 624 | 95 | 325 |
| 18 | 125 | 44 | 331 | 70 | 627 | 96 | 332 |
| 19 | 131 | 45 | 343 | 71 | 631 | 97 | 356 |
| 20 | 132 | 46 | 346 | 72 | 632 | 98 | 446 |
| 21 | 134 | 47 | 351 | 73 | 654 | 99 | 452 |
| 22 | 143 | 48 | 364 | 74 | 662 | 100 | 454 |
| 23 | 152 | 49 | 365 | 75 | 664 | 101 | 455 |
| 24 | 155 | 50 | 371 | 76 | 703 | 102 | 462 |
| 25 | 156 | 51 | 411 | 77 | 712 | 103 | 523 |
| 26 | 162 | 52 | 412 | 78 | 723 | 104 | 526 |

MIDLAND®

X-TALKER

2-Way Radios



Weather Radios



HD Wearable Video Cameras

LXT / GXT

2-Way Radios



Emergency Crank Radios



CB Radios

ACCESSORIES

Accessories can be purchased at midlandusa.com

FCC Warnings and Statements

IMPORTANT!

Changes or modifications to this unit not expressly approved by MIDLAND RADIO CORPORATION could void your right to operate this unit. Your radio is set up to transmit a regulated signal on an assigned frequency. It is against the law to alter or adjust the settings inside the COMMUNICATOR to exceed those limitations. Any adjustment to your radio must be made by qualified technicians.

This device complies with Part 15 of the FCC Rules. Operation is subject to the following two conditions; (1) this device does not cause any harmful interference, and (2) this radio must accept any interference they may cause undesired operations

LIMITED WARRANTY (United States and Canada)

Subject to the exclusions set forth below, Midland Radio Corporation will repair or replace, at its option without charge, any Midland FRS/GMRS which fails due to a defect in material or workmanship within One Year following the initial consumer purchase.

This warranty does not apply to water damage, battery leak, abuse or misuse of unauthorized accessories, unauthorized service or modification or altered products. Accessories have a 90 day warranty from date of purchase, including the power cable and microphone that are included with the unit.

ANY IMPLIED WARRANTIES, INCLUDING, WITHOUT LIMITATION THE IMPLIED WARRANTIES OF MERCHANTABILITY AND FITNESS FOR A PARTICULAR PURPOSE, SHALL BE LIMITED AS SET FORTH HEREIN AND TO THE DURATION OF THE LIMITED WARRANTY, OTHERWISE THE REPAIR OR REPLACEMENT AS PROVIDED UNDER THIS EXPRESS LIMITED WARRANTY IS THE EXCLUSIVE REMEDY OF THE CONSUMER AND IS PROVIDED IN LIEU OF ALL OTHER WARRANTIES, EXPRESS OR IMPLIED. IN NO EVENT SHALL MIDLAND BE LIABLE, WHETHER IN CONTRACT OR TORT (INCLUDING BUT NOT LIMITED TO NEGLIGENCE, GROSS NEGLIGENCE, BODILY INJURY, PROPERTY DAMAGE AND DEATH) FOR DAMAGES IN EXCESS OF THE PURCHASE PRICE OF THE PRODUCT OR ACCESSORY, OR FOR ANY INDIRECT, INCIDENTAL, SPECIAL OR CONSEQUENTIAL DAMAGES OF ANY KIND, OR LOSS OF REVENUE OR PROFITS, LOSS OF BUSINESS, LOSS OF INFORMATION OR DATA OR OTHER FINANCIAL LOSS ARISING OUT OF OR IN CONNECTION WITH THE ABILITY OR INABILITY TO USE THE PRODUCTS OR ACCESSORIES TO THE FULL EXTENT THESE DAMAGES MAY BE DISCLAIMED BY LAW.

For Product Purchased in the USA:

Performance of any obligation under this warranty may be obtained by returning the warranted product, prepaid freight, along with proof of purchase to:

**Midland Radio Corporation
Warranty Service Department
5900 Parretta Drive
Kansas City, MO 64120**

This warranty gives you specific legal rights, and you may also have other rights, which vary from state to state.

***NOTE:** The above warranty applies only to merchandise purchased in the United States of America or any of the territories or possessions thereof, or from a U.S. Military exchange.*

For Product Purchased in Canada:

Performance of any obligation under this warranty may be obtained by returning the warranted product, along with proof of purchase, to your place of purchase in Canada.

This warranty gives you specified legal rights. Additional warranty rights may be provided by law in some areas within Canada.

**THIS PAGE IS
INTENTIONALLY
LEFT BLANK**



MIDLAND RADIO CORPORATION

5900 Parretta Drive

Kansas City, MO 64120

Call 816.241.8500

**We'd love to hear from you! Let us know what
you think of your new Midland product at:**



or by visiting us at:

midlandusa.com

**Note: Features and Specifications are subject to change without
notice. MIDLAND RADIO CORPORATION is not responsible for
unintentional errors or omissions on its packaging.**